



Bull & Bred Female Sale

DEC. 3, 2019

1 P.M. MST STOCKMEN'S WEST, DICKINSON, ND



Pete, Vawmita & Kyle Best

1930 118th Ave NW, Watford City, N.D., 58854
(701) 842-4865 • (701) 570-6959

bestangus@yahoo.com •

www.BestAngusAndQuarterHorses.com



Aaron & Sheyna Strommen

Cassidy, Cooper & Clint

6485 County Road 80 Fort Rice, N.D., 58554
(701) 445-2020 • (701) 290-7983

strommen@westriv.com •

www.StrommenRanch.com



Shane & Amanda Talkington

Abby, Hadley & Cade

3137 136th Ave SW • Belfield, N.D., 58622
(701) 575-4159 • (701) 290-7222

talkingtonangusranch@yahoo.com •

www.TalkingtonAngusRanch.com

Welcome to the Badlands Angus Alliance Bull & Bred Female Sale. This is not only a partnership between Best Angus, Strommen Ranch, and Talkington Angus Ranch, it is also a partnership with all of our current and future customers. With our combined resources and marketing assistance from our partners at Stockmen's Livestock Exchange in Dickinson, N.D., **we are committed to helping our customers add value to their females** and building the Badlands Angus Alliance sale into **THE PREMIERE SOURCE** for **bred females in western North Dakota.**

In our second year, this sale features more than 500 elite, source and genetic-verified bred females from our respective programs and from our commercial customers. **We are proud of the exceptional herds our customers are building and we are excited to help them market their top females through this sale.** They are either influenced by or bred to Best, Strommen or Talkington seedstock.

These bred females are the type and kind you can use to build a profitable, sustainable herd for generations. They are bred to be easy-fleshing cattle that are productive on minimal inputs, with enough emotional intelligence to be handled with minimal labor, and enough survival instinct to get out and forage, nurture their calves and bring in pounds at weaning.

Many of them are AI-bred to proven, calving-ease sires with a tight calving window, and have been ultrasounded for calving dates. They are all source and genetic-verified and bred to known calving-ease genetics. A full ranch and production history on each consignment is included in the heifer listings.

The coming-2-year-old ANGUS bulls are thick, stout, rugged, fully guaranteed and will be ready for service in big country. **They were retained specifically for this sale.** We are excited to offer these bulls as it gives us a chance to see our genetics as they age and develop. These bulls have been slowly developed with soundness and longevity in mind with an optimum gain not an excessive gain. **Our ultimate goal is to have the bulls range-ready, sound-footed and ready to go to work for you!**

Bests • Strommens • Talkingtons



Bull & Bred Female Sale DEC. 3, 2019

1 P.M. MST ~ STOCKMEN'S WEST, DICKINSON, N.D.

SALE DAY PHONES

Shane Talkington Cell..... (701) 290-7222
Aaron Strommen Cell (701) 290-7983
Pete Best Cell..... (701) 570-6959

SALE ORDER • Bulls will sell first then females will follow.

VIDEOS • Visit our respective websites for links to videos of the bulls and females in this sale:

Strommen Ranch www.StrommenRanch.com
Talkington Angus Ranch www.TalkingtonAngusRanch.com
Best Angus www.BestAngusAndQuarterHorses.com

TERMS AND CONDITIONS • Bulls sell under the standard terms and conditions of the American Angus Association. Terms of the sale are cash. Full payment is due on sale day.

BASE PRICE • All bulls will have a minimum price of \$3,000 sale day. Bidding will begin at the base price.

BULL DEVELOPMENT • These bulls have been handled correctly and developed without ANY creep. They have been fed just enough to express genetic differences, but not overfed as to compromise soundness or longevity. We want you to have a bull that will do his job and last for years.

EPDS • EPDs are current as of Oct. 20, 2019.

SALE TIME • The sale starts at 1 p.m. MST.

SALE STAFF

Kyle Shobe, Auctioneer (406) 366-0472
Kris Peterson, Special Assignment (701) 399-0305
Rowdy Benson, Special Assignment (605) 569-1493
Scott Ressler, North Dakota Stockmen's Assoc. (701) 391-7310
James Erickson, Stockmen's Livestock Exchange..... (701) 290-4861
John Fischer, Stockmen's Livestock Exchange..... (701) 290-1606

BULL DELIVERY • We will offer free delivery on the bulls within 500 miles of Dickinson, N.D. Deliveries will begin immediately following the sale.

HEALTH • All bulls have been on a complete health program as prescribed by our respective veterinarians.

FERTILITY • All bulls have passed a fertility exam performed by Dr. Gary Scheiber for the Best Angus bulls, Dr. Pat Bierman for the Strommen bulls and Dr. Chance Noyce for the Talkington bulls.

SIGHT UNSEEN PURCHASES • If you, for some reason, are unable to attend the sale, but wish to place a bid, feel free to call us and we will handle your bid as if you were here. If you wish to be on the phone during the sale, we will try to accommodate your request. Please let us know in advance so arrangements can be made. All sight unseen bull purchases are fully guaranteed.

GUARANTEE • The bulls are fully guaranteed for one breeding season.

LIABILITY • Anyone attending this sale does so at their own risk. Neither the owners nor anyone connected to this sale, assumes any liability, legal or otherwise.

Catalog designed by *Strommen Livestock Services*
Fort Rice, N.D. (701) 290-3886


ANGUS cattle bred to SURVIVE and THRIVE in a Northern Plains environment!





*Shane & Amanda Talkingington
Abby, Hadley & Cade*

3137 136th Ave SW • Belfield, N.D., 58622
(701) 575-4159 • (701) 290-7222

talkingtonangusranch@yahoo.com • 
www.TalkingtonAngusRanch.com

Cattlemen & Friends - Welcome to the second annual Badlands Angus Alliance Bull and Bred Heifer Sale. We are thrilled to be partnering with like-minded Angus breeders Bests and Strommens to not only provide a tremendous set of coming 2-year-old bulls, but also a premiere group of nearly 500 bred heifers consigned by well-respected commercial operations throughout western North Dakota.

Our ranch is located on the edge of the Badlands between Belfield and Medora, as we carry on the family operation that began here 113 years ago. Our cows must be able to handle rugged terrain and a year-round forage-based environment with minimal supplementation. The cattle must be easy-fleshing, sound and functional in their structure, docile enough to be handled with minimal labor, and fertile enough to breed in a 42-day breeding season. These cattle are treated no differently than our commercial customers treat their cattle.

The 10 virgin, coming 2-year-old bulls that we are bringing to this sale have been set aside specifically for this sale since they were weaned. They are not bulls that we couldn't sell or didn't pass a semen test as yearlings. The bulls we are offering are all sired by our herd bulls and are all grandsons of either SAV Resource or Leachman Right Time. They have been developed with longevity in mind. They were fed for a 2.5 lb. average daily gain last winter and ran on grass from May 15 to September 15. From September 15 to sale day, they will continue to run on pasture, weather permitting, but we will be supplementing them. These bulls will have had more exercise than any you will find anywhere. Our bulls have all had an Angus GS genomic profile done and have all been parent-verified, so you can rest assured the bulls you buy will be who they are supposed to be. If you would like any additional data, information, or would like to see the bulls or their dams before the sale, feel free to contact us anytime.

- Shane, Amanda, Abby, Hadley, and Cade Talkingington

ST TALKINGTON ANGUS RANCH

Friday, February 14, 2020

~ SELLING 60 BULLS ~ OTHER SIRES REPRESENTED: SAT Juneau 706 and SAV Raindance

TEHAMA TAHOE



CONNEALY MATERNAL MADE



WERNER FLAT TOP



For a catalog, please call or email **701-575-4159 • 701-290-7222**

SHANE AND AMANDA TALKINGTON • BELFIELD, ND

talkingtonangusranch@yahoo.com • www.talkingtonangusranch.com



LOT 1 ~ SAT RESOURCE 4201 8192



LOT 2 ~ SAT RESOURCE 4201 8190



SAT RESOURCE 4201 8192

BD: 4/1/2018

Reg #: 19270116

#S A V Resource 1441
Ellingson Resource 4201
 #E A Bemindful Maid 709

ALC IN Focus I46U
ICC Everelda Entense 1897
 ICC Everelda Entense 8526

Rito 707 of Ideal 3407 7075
 S A V Blackcap May 4136
 #Sitz Tradition RLS 8702
 P A R Traveling Westwind 185
 #Mytty In Focus
 ALC Hazel L12L
 #Sitz Alliance 6595
 ER Everelda Entense K251

BW	WWR	YWR	CE	BW	WW	YW	Milk
89	100	100	-1	3.6	70	131	22

8192 is a true power bull. This docile bull is high-performance and expressive in his muscle shape.



SAT RESOURCE 4201 8190

BD: 4/1/2018

Reg #: 19270114

#S A V Resource 1441
Ellingson Resource 4201
 #E A Bemindful Maid 709

#Koupal Juneau 797
R&D Lass 216-518
 R&D Miss Expedition 103-518

Rito 707 of Ideal 3407 7075
 S A V Blackcap May 4136
 #Sitz Tradition RLS 8702
 P A R Traveling Westwind 185
 #O C C Juneau 807J
 Koupals Elba 187
 Basin Expedition 867N
 R&D Miss Royce 103

BW	WWR	YWR	CE	BW	WW	YW	Milk
101	104	106	2	3.9	70	127	12

Slightly more frame in this guy than the rest of our bulls, if that is what you are looking for. His coming 8-year-old Juneau 797 dam is a functional cow that is hard to fault phenotypically.



SAV Resource 1441 • Grandsire of Lots 1-6



SAT Timeless 703 • Maternal brother of Lot 3



LOT 4 ~ SAT RESOURCE 4201 8216



SAT RESOURCE 4201 8220

BD: 4/18/2018

Reg #: 19270124

#S A V Resource 1441
Ellingson Resource 4201
#E A Bemindful Maid 709

#GDAR Game Day 449
R&D Blackbird 117-303
R&D Blackbird 972-117

Rito 707 of Ideal 3407 7075
S A V Blackcap May 4136
#Sitz Tradition RLS 8702
P A R Traveling Westwind 185
#Boyd New Day 8005
#G D A R Miss Wix 474
#Sinclair Extra 4X13
R&D Blackbird 6867-972

BW	WW	YWR	CE	BW	WW	YW	Milk
80	103	100	3	1.4	54	103	32

This smooth-made bull is backed by a tremendous Game Day x 4X13 dam who is 3/93 for BW and 3/105 for WW. She is moderate, with a perfect udder and excellent foot quality.



SAT RESOURCE 4201 8216

BD: 4/14/2018

Reg #: 19270123

#S A V Resource 1441
Ellingson Resource 4201
#E A Bemindful Maid 709

#LD Redirect 11
SAT Pinny 912
SAT Pinny 710

Rito 707 of Ideal 3407 7075
S A V Blackcap May 4136
#Sitz Tradition RLS 8702
P A R Traveling Westwind 185
#C A Future Direction 5321
L D 6148 Pride 9112
#C R A Bextor 872 5205 608
G A R Pinnacle 280

BW	WW	YWR	CE	BW	WW	YW	Milk
97	102	103	-3	3.9	63	108	13

8216 is a stout, thick-made bull who is moderate in his stature. His 10-year-old dam is a powerful, consistent producer, who is easy-fleshing with perfect feet. She is also the Granddam of Lot 7, 8202.



SAT RESOURCE 4201 8179

BD: 3/28/2018

Reg #: 19270113

#S A V Resource 1441
Ellingson Resource 4201
#E A Bemindful Maid 709

#B/R New Day 454
SAT Rachel 005
SAT Rachel 505

Rito 707 of Ideal 3407 7075
S A V Blackcap May 4136
#Sitz Tradition RLS 8702
P A R Traveling Westwind 185
#Boyd New Day 8005
B/R Ruby 1224
#Rito 112 of 2536 Rito 616
G D A R Rachel 3284

BW	WW	YWR	CE	BW	WW	YW	Milk
95	100	100	4	1.2	57	99	21

This bull's full sister is a favorite in her age group. His dam is 7/101 for WW at 9 years of age with good feet and is loaded with capacity.



SAT RESOURCE 4201 8176

BD: 3/27/2018

Reg #: 19270112

#S A V Resource 1441
Ellingson Resource 4201
#E A Bemindful Maid 709

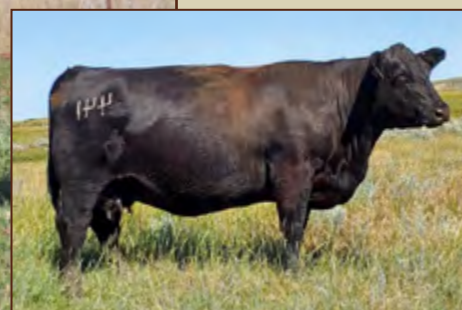
Landmark Admiral 118
R&D Lass 253-847
#R&D Miss Lotto 847

Rito 707 of Ideal 3407 7075
S A V Blackcap May 4136
#Sitz Tradition RLS 8702
P A R Traveling Westwind 185
Raven Admiral 1726
#Landmark Black Lass 118
#Stevenson MoneyMaker R185
R&D Royce 099-867N

BW	WW	YWR	CE	BW	WW	YW	Milk
82	100	90	3	1.8	51	93	24

Another Resource 4201 son, who has done a great job for us. The first daughters in production are broody, easy-fleshing cows who are raising big calves.





SAT Pinny 441 • Dam of Lot 7

LOT 7 ~ SAT RIGHT TIME 547 8202



LOT 8 ~ SAT RIGHT TIME 547 8210



SAT RIGHT TIME 547 8202

BD: 4/9/2018

Reg #: 19270118

#Leachman Right Time
Marcys Right Time 547
#Marcys Erica 866

#Soo Line Motive 9016
SAT Pinny 441
SAT Pinny 912

#N Bar Emulation EXT
Leachman Erica 0025
#Baldridge Kaboom K243 KCF
Marcys Erica 629
HF Kodiak 5R
TLA Beauty 5R
#LD Redirect 11
SAT Pinny 710

BW	WWR	YWR	CE	BW	WW	YW	Milk
91	105	102	6	-0.3	64	100	27

This complete bull is backed by a powerful Motive daughter who is easy keeping and possesses ratios of 3/101 for both WW and YW. This bull owns a tremendous disposition.



SAT RIGHT TIME 547 8210

BD: 4/12/2018

Reg #: 19270121

#Leachman Right Time
Marcys Right Time 547
#Marcys Erica 866

#Koupal Juneau 797
R&D Lass 04-423
R&D Miss Lass 04 -841

#N Bar Emulation EXT
Leachman Erica 0025
#Baldridge Kaboom K243 KCF
Marcys Erica 629
#O C C Juneau 807J
Koupals Elba 187
#S A V Final Answer 0035
R&D Bandy LASS-345

BW	WWR	YWR	CE	BW	WW	YW	Milk
80	110	107	9	0.9	61	102	30

Calving-ease prospect who weaned off at 750 lbs. He is backed by a practical Juneau 797 dam who solidifies his low birth weight projection with a BW ratio of 3/94 while maintaining a WW ratio of 3/102.





LOT 9 ~ SAT VERSATILE 8208



SAT VERSATILE 8208

BD: 4/11/2018

Reg #: 19237199

#S A V Resource 1441
Ellingson Versatile
SAV Blackclass 124 EA

#Soo Line Motive 9016

SAT Eola 505
Osa Mustang Krugger of U17

Rito 707 of Ideal 3407 7075
S A V Blackcap May 4136
#Basin Max 602C
S A V Blackclass 8077
HF Kodiak 5R
TLA Beauty 5R
#S A V Mustang 9134
OSA Ms Solution U17

BW	WW	YWR	CE	BW	WW	YW	Milk
100	101	97	4	1.5	57	107	22

His Motive dam is 2/102 for WW and his Mustang Granddam is 4/101 for WW and 4/105 for YW.



Ellingson Versatile • Sire of Lots 9-10



SAT VERSATILE 8175

BD: 3/26/2018

Reg #: 19237202

#S A V Resource 1441
Ellingson Versatile
SAV Blackclass 124 EA

#Soo Line Motive 9016

SAT Mabel 538
SAT Mabel 407

Rito 707 of Ideal 3407 7075
S A V Blackcap May 4136
#Basin Max 602C
S A V Blackclass 8077
HF Kodiak 5R
TLA Beauty 5R
#Bon View New Design 208
R R Mabel 4440

BW	WW	YWR	CE	BW	WW	YW	Milk
100	101	101	4	1.3	60	105	24

$\frac{3}{4}$ brother to Lot 9, 8208. His granddam stayed in our herd until 11 years of age. He is out of the Mabel cow family, which has made a tremendous impact on our herd.





Pete, Vawnita & Kyle Best

1930 118th Ave NW, Watford City, N.D., 58854

(701) 842-4865 • (701) 570-6959

bestangus@yahoo.com • 

www.BestAngusAndQuarterHorses.com

Cattlemen & Friends - Welcome to the 2nd annual Badlands Angus Alliance sale. We are extremely grateful to be part of this sale. Talkingtons and Strommens are great partners, and the alliance with all of the female consigners is off to a really good start. Our goal is to provide an avenue that helps our customers achieve the value they deserve for raising superior Angus females.

We ranch in the North Dakota badlands southeast of Watford City in some of the most rugged terrain in the region. We are committed to producing cattle that thrive under harsh conditions. Ranching is full of challenges, which is why we believe it is better for us to design cattle that will be profitable working in harmony with nature instead of a constant struggle. Profitably designed cattle require less labor inputs since they are wide made, deep ribbed, and easy fleshing. They can maintain their body condition on poor quality stockpiled forage. They have sound udders, feet and legs allowing them to forage and care for their calves without extra help from management. Disposition and intelligence are extremely important traits for reducing labor requirement as well. Of course, we can't forget the most important trait of all, fertility. To be profitable for all segments of the industry our cattle need to gain and be feed efficient with excellent carcass traits. To incorporate all of that into one bull is certainly a challenging balancing act, but that is what makes this so much fun!

These bulls were retained expressly for this sale. Some were used as cleanup bulls on our registered cows and a select group of heifers last year. The remaining bulls were born between April 10 and May 20, 2018. All of the bulls have been Trich tested and are part of a full vaccination program, so you can buy with confidence.

We are a family operation and I need to thank all of the family and friends that help us keep Best Angus running. We would also like to thank our customers. Without your support we would not be in the seedstock business. We hope you can make it to Dickinson on December 3! -Pete, Vawnita & Kyle Best

PROFITABLE *by design*

EFFICIENT *by nature*





Pete & Vawnita Best
WATFORD CITY ND

701-570-6959 ~ bestangus@yahoo.com
www.BestAngusAndQuarterHorses.com

BEST *value in the* BADLANDS

Annual Production Sale
March 2, 2020
Watford City, N.D.

Offering **75** ANGUS BULLS

70 YEARLINGS
5 TWO-YEAR OLDS



Best Fortunate 6060 • Sire of Lot 11



BEST FORTUNATE 8116

BD: 4/16/2018

Reg #: 19178976

#Sinclair Fortunate Son
Best Fortunate 6060
Rosetta 024 of Best Angus

#O C C Missing Link 830M
Miss Wix 2009 of Best Angus
#Miss Wix 703 of Best Angus

Sinclair Emulate 7XT28
#Sinclair Blackbird 2P8 7079
#Sinclair Extra 4X13
Rosetta 8014 of Best Angus
O C C Headliner 661H
O C C Dixie Erica 946K
#BT Right Time 24J
#Miss Wix 307 of Best Angus

BW	WW	YWR	CE	BW	WW	YW	Milk
92	104	105	0	3.2	65	115	25

This one is a stud. He had over a 16-inch REA at yearling. He is soggy and powerful, just like his mother. We used him clean-up on a group of our registered cows.



Miss Marie 367 of Best Angus • Full sister to the Dam of Lots 12-13



BEST RESOURCE 8027

BD: 3/22/2018

Reg #: 19315700

BW	WW	YWR	CE	BW	WW	YW	Milk
96	111	107	1	2.9	74	134	26

High-performance, powerful Resource son we used on our registered cows last summer.



BEST RESOURCE 8045

BD: 3/29/2018

Reg #: 19340360

Rito 707 of Ideal 3407 7075
#S A V Resource 1441
S A V Blackcap May 4136

#LAR Alliance 64L
Miss Marie 263 of Best Angus
Marie 7010 of Best Angus

#R R Rito 707
Ideal 3407 of 1418 076
#S A V 8180 Traveler 004
#S A V May 2397
#Sitz Alliance 7617
Eileenmere Diamond 16I L A R
#S A V 8180 Traveler 004
C A R Miss Viking 604

BW	WW	YWR	CE	BW	WW	YW	Milk
88	112	106	0	3.8	73	135	27

Good stout Resource we used on our registered cows last year.



Best Resource 8038 • Flush brother to Lots 12 and 13 that sold in our spring 2019 sale.



BEST RESOURCE 8002

BD: 3/14/2018

Reg #: 19336756

Rito 707 of Ideal 3407 7075
#S A V Resource 1441
S A V Blackcap May 4136

#LAR Alliance 64L
#Rosetta 261 of Best Angus
Rosetta 811 of Best Angus

#R R Rito 707
Ideal 3407 of 1418 076
#S A V 8180 Traveler 004
#S A V May 2397
#Sitz Alliance 7617
Eileenmere Diamond 16I L A R
#S A V 8180 Traveler 004
Rosetta 429 of Best Angus

BW	WW	YWR	CE	BW	WW	YW	Milk
80	100	100	10	0	52	98	20

Really good low birth weight Resource. Should work on heifers. There were 10 ET calves from this flush. They averaged 79 lbs at birth all out of mature cows. Rosetta 261 has had 5 calves with an average BW of 71 lbs.



Rosetta 261 of Best Angus • Dam of Lot 14.



LOT 15 ~ BEST WINCHESTER 8007



Lassie 104 of Circle V • Dam of Lots 15-17



LOT 16 ~ BEST WINCHESTER 8010



Angus Alliance Winchester 975 • Sire of Lots 15-17

Flush Brothers



BEST WINCHESTER 8007

BD: 3/15/2018

Reg #: 19304195

BW	WWR	YWR	CE	BW	WW	YW	Milk
78	107	115	7	1.4	56	103	24

This bull was our pick to use on our top group of heifers. The heifer mates to these bulls are absolutely gorgeous.



BEST WINCHESTER 8010

BD: 3/17/2018

Reg #: 19304196

BW	WWR	YWR	CE	BW	WW	YW	Milk
88	95	99	11	1.2	47	82	17

We used this bull on one of our registered cow groups. Dam is an excellent donor that we purchased from Strommen Ranch. She sports a WR of 6/110.



BEST WINCHESTER 8024

BD: 3/21/2018

Reg #: 19304197

#N Bar Emulation EXT
Angus Alliance Winchester 975
Coleman Donna 386

S R Alliance 904
#Lassie 104 of Circle V
Lassie 6199 of Mc Cumber

#Emulation N Bar 5522
N Bar Primrose 2424
#Basin Rainmaker 654X
KMK Donna J311
#Sitz Alliance 6595
S R Betty 512
MC Cumber 7078 VRD 3108
Lassie 331 of Mc Cumber

BW	WWR	YWR	CE	BW	WW	YW	Milk
82	92	96	7	0.9	46	82	25

Another bull we used on registered cows out of Lassie 104V.



Gale 6004 of Best Angus and calf • Maternal Granddam of Lot 18



Rosetta 8014 of Best Angus • Dam of Lot 19



Rosetta 420 of Best Angus at age 14 • Dam of Lot 20



LOT 21 ~ BEST FORTUNATE 8126



BEST FORTUNATE 8140

BD: 4/30/2018

Reg #: 19178947

#Sinclair Fortunate Son
Best Fortunate 6060
Rosetta 024 of Best Angus

#O C C Missing Link 830M
#Gale 331 of Best Angus
Gale 6004 of Best Angus

Sinclair Emulate 7XT28
#Sinclair Blackbird 2P8 7079
#Sinclair Extra 4X13
Rosetta 8014 of Best Angus
O C C Headliner 661H
O C C Dixie Erica 946K
#Leachman Right Time
Gale 5127 of Mc Cumber

BW	WW	YWR	CE	BW	WW	YW	Milk
92	103	109	3	2.2	41	80	25

This bull is a real tank. A high-performance bull in a moderate package. Dam is a perfect-uddered, easy-fleshing, docile cow. Granddam was flushed this past spring at age 12.



BEST FORTUNATE 8132

BD: 4/25/2018

Reg #: 19178964

#Sinclair Fortunate Son
Best Fortunate 6050
Miss Marie 0013 Best Angus

#Leachman Right Time
Rosetta 8014 of Best Angus
#Rosetta 149 of Best Angus

Sinclair Emulate 7XT28
#Sinclair Blackbird 2P8 7079
#Car Tracker 904
C A R Miss Marie 701
#N Bar Emulation EXT
Leachman Erica 0025
#G D A R Executive 727
Rosetta 501 of Best Angus

BW	WW	YWR	CE	BW	WW	YW	Milk
92	107	109	3	2.8	40	73	28

Here is an excellent bull out of one of our very top cows. Dam has done everything we could ask a cow to do. She has settled AI every time we bred her. We bull breed after flushing. After this spring, this 12-year-old cow will have had over 50 calves.



BEST FORTUNATE 8138

BD: 4/28/2018

Reg #: 19304395

#Sinclair Fortunate Son
Best Fortunate 6060
Rosetta 024 of Best Angus

#Boyd New Day 8005
#Rosetta 420 of Best Angus
#Rosetta 107 of Best Angus

Sinclair Emulate 7XT28
#Sinclair Blackbird 2P8 7079
#Sinclair Extra 4X13
Rosetta 8014 of Best Angus
#A A R New Trend
S V F Forever Lady 57D
#G D A R Executive 727
Rosetta 201 of Best Angus

BW	WW	YWR	CE	BW	WW	YW	Milk
86	108	109	3	3	38	72	22

This soon-to-be 16-year-old Pathfinder is still going strong. Ultrasound data shows she will be having another AI calf this spring. She still qualifies for Pathfinder status. This bull is one of the best bulls she has had over the years.



BEST FORTUNATE 8126

BD: 4/20/2018

Reg #: 19178969

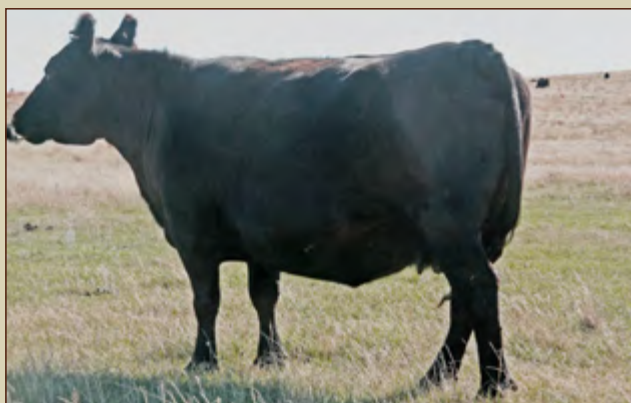
#Sinclair Fortunate Son
Best Fortunate 6060
Rosetta 024 of Best Angus

Best Ft Peck 336
Rosetta 5172 of Best Angus
Rosetta 8014 of Best Angus

Sinclair Emulate 7XT28
#Sinclair Blackbird 2P8 7079
#Sinclair Extra 4X13
Rosetta 8014 of Best Angus
#O C C Missing Link 830M
Gale 7024 of Best Angus
#Leachman Right Time
#Rosetta 149 of Best Angus

BW	WW	YWR	CE	BW	WW	YW	Milk
78	96	99	7	0	35	67	21

He should work on heifers. Dam is a gorgeous, moderate-framed, easy-fleshing cow.



Rosetta 8016 of Best Angus • Paternal Granddam of Lot 23



BEST ROUGH CREEK 8131

BD: 4/24/2018

Reg #: 19542484

Rough Creek 45 of Ash Coulee
A C Rough Creek 638
#A C Princess 976

#LAR Alliance 64L
Rosetta 625 of Best Angus
#Rosetta 068 of Best Angus

Best Rough Creek 125
A C Gypsofolia 548
GDAR Dateline 354
A C Princess 500
#Sitz Alliance 7617
Eileenmere Diamond 16I L A R
#G D A R Executive 727
Rosetta 443 of Best Angus

BW	WWR	YWR	CE	BW	WW	YW	Milk
74	95	101	2	1.2	44	86	29

Nice, stout bull out of a really nice young cow. His birth weight would suggest he would work on heifers, but there is some birth weight in the pedigree.



BEST ROUGH CREEK 8137

BD: 4/28/2018

Reg #: 19178945

Rough Creek 45 of Ash Coulee
A C Rough Creek 638
#A C Princess 976

#LAR Alliance 64L
Queen 6029 of Best Angus
V D A R Queen 6365

Best Rough Creek 125
A C Gypsofolia 548
GDAR Dateline 354
A C Princess 500
#Sitz Alliance 7617
Eileenmere Diamond 16I L A R
#Sinclair Net Present Value
VDAR Queen 1345

BW	WWR	YWR	CE	BW	WW	YW	Milk
76	109	102	5	1.8	51	90	30

Good looking young bull. His dam is an ET daughter out of an excellent cow we purchased from VDAR. This bull scanned as well as any bull we have raised; IMF Ratio of 198 with over a 13-square-inch REA.



BEST ROUGH CREEK 8127

BD: 4/21/2018

Reg #: 19178967

Rough Creek 45 of Ash Coulee
A C Rough Creek 638
#A C Princess 976

#Sinclair Fortunate Son
Rosetta 604 of Best Angus
#Rosetta 420 of Best Angus

Best Rough Creek 125
A C Gypsofolia 548
GDAR Dateline 354
A C Princess 500
Sinclair Emulate 7XT28
#Sinclair Blackbird 2P8 7079
#Boyd New Day 8005
#Rosetta 107 of Best Angus

BW	WWR	YWR	CE	BW	WW	YW	Milk
72	93	95	6	1.4	39	70	26

Nice bull that should work on heifers. Dam is a moderate-framed 1,100 lb. cow with a perfect udder. Granddam is still a Pathfinder at age 15, possessing a WR of 13/105.



BEST FORTUNATE 8147

BD: 5/8/2018

Reg #: 19178949

#Sinclair Fortunate Son
Best Fortunate 6056
#Rosetta 8016 of Best Angus

#O C C Missing Link 830M
Miss Wix 2008 of Best Angus
#Miss Wix 307 of Best Angus

Sinclair Emulate 7XT28
#Sinclair Blackbird 2P8 7079
#Leachman Right Time
#Rosetta 149 of Best Angus
O C C Headliner 661H
O C C Dixie Erica 946K
#G D A R Executive 727
Miss Wix 0100 of Best Angus

BW	WWR	YWR	CE	BW	WW	YW	Milk
90	100	100	4	1.5	42	73	26

Nice performance bull out of one of our highest weaning ratio cows.



Rosetta 912 of Best Angus • Dam of Lot 26



BEST FORTUNATE 8112

BD: 4/12/2018

Reg #: 19178979

#Sinclair Fortunate Son
Best Fortunate 6060
Rosetta 024 of Best Angus

#S A V 8180 Traveler 004
Rosetta 912 of Best Angus
#Rosetta 549 of Best Angus

Sinclair Emulate 7XT28
#Sinclair Blackbird 2P8 7079
#Sinclair Extra 4X13
Rosetta 8014 of Best Angus
#Sitz Traveler 8180
Boyd Forever Lady 8003
#Boyd New Day 8005
Rosetta 990 of Best Angus

BW	WWR	YWR	CE	BW	WW	YW	Milk
86	84	93	0	3.3	35	68	19

Beautiful cow that has raised some really good ones in past years. This calf got separated from his mother and has been playing catch-up ever since. He scanned over a 15-inch REA.



Sinclair Fortunate Son • Grandsire of 14 bulls in this sale

28

BEST FORTUNATE 8110

BD: 4/11/2018

Reg #: 19178981

#Sinclair Fortunate Son
Best Fortunate 6060
Rosetta 024 of Best Angus

#LAR Alliance 64L
Rosetta 5029 of Best Angus
Rosetta 8014 of Best Angus

Sinclair Emulate 7XT28
#Sinclair Blackbird 2P8 7079
#Sinclair Extra 4X13
Rosetta 8014 of Best Angus
#Sitz Alliance 7617
Eileenmere Diamond 161 L A R
#Leachman Right Time
#Rosetta 149 of Best Angus

BW	WW	YWR	CE	BW	WW	YW	Milk
82	77	92	4	1.5	28	65	22

This bull really came on when he got on feed.

30

BEST FORTUNATE 8154

BD: 5/20/2018

Reg #: 19304404

#Sinclair Fortunate Son
Best Fortunate 6060
Rosetta 024 of Best Angus

CAR Tracker 305
Sarah 5012 of Best Angus
A C Sarah 39

Sinclair Emulate 7XT28
#Sinclair Blackbird 2P8 7079
#Sinclair Extra 4X13
Rosetta 8014 of Best Angus
#Car Tracker 904
C A R Miss Julie 643
C T Miner 308
A C Sarah 93

BW	WW	YWR	CE	BW	WW	YW	Milk
80	90	100	1	2.6	34	72	20

Real attractive bull that should be OK on heifers. Dam is a moderate 1,100 lb. cow.

27

BEST FORTUNATE 8129

BD: 4/22/2018

Reg #: 19178965

#Sinclair Fortunate Son
Best Fortunate 6050
Miss Marie 0013 Best Angus

#LAR Alliance 64L
Rosetta 5021 of Best Angus
Rosetta 8014 of Best Angus

Sinclair Emulate 7XT28
#Sinclair Blackbird 2P8 7079
#Car Tracker 904
C A R Miss Marie 701
#Sitz Alliance 7617
Eileenmere Diamond 161 L A R
#Leachman Right Time
#Rosetta 149 of Best Angus

BW	WW	YWR	CE	BW	WW	YW	Milk
90	106	103	2	2.4	46	85	29

Good performing calf with a big rib eye.

29

BEST FORTUNATE 8118

BD: 4/17/2018

Reg #: 19178974

#Sinclair Fortunate Son
Best Fortunate 697
Rosetta 335 of Best Angus

Best Alliance 2001
Rosetta 494 of Best Angus
#Rosetta 8016 of Best Angus

Sinclair Emulate 7XT28
#Sinclair Blackbird 2P8 7079
#LAR Alliance 64L
#Rosetta 8016 of Best Angus
#LAR Alliance 64L
Rosetta 5001 of Best Angus
#Leachman Right Time
#Rosetta 149 of Best Angus

BW	WW	YWR	CE	BW	WW	YW	Milk
82	100	95	7	-0.4	39	71	32

He should be OK on heifers.

31

BEST FORTUNATE 8121

BD: 4/18/2018

Reg #: 19178972

#Sinclair Fortunate Son
Best Fortunate 697
Rosetta 335 of Best Angus

Bo Duke 8006 of Best Angus
Best Bo Duke 060
Miss Wix 835 of Best Angus

Sinclair Emulate 7XT28
#Sinclair Blackbird 2P8 7079
#LAR Alliance 64L
#Rosetta 8016 of Best Angus
#CAR Duke 104
C A R Miss Viking 604
K N M Right Time 659
Miss Wix 664 of Best Angus

BW	WW	YWR	CE	BW	WW	YW	Milk
90	106	100	3	1.5	43	78	32

Good calf that weaned well. Cow is moderate-framed and easy-fleshing with a lot of natural thickness.





BEST ROUGH CREEK 8135

BD: 4/27/2018

Reg #: 19304407

Rough Creek 45 of Ash Coulee
A C Rough Creek 638
#A C Princess 976

#LAR Alliance 64L
Rosetta 6007 of Best Angus
#Rosetta 9003 of Best Angus

Best Rough Creek 125
A C Gypsofolia 548
GDAR Dateline 354
A C Princess 500
#Sitz Alliance 7617
Eileenmere Diamond 161 L A R
#Boyd New Day 8005
Rosetta 903 of Best Angus

BW	WW	YWR	CE	BW	WW	YW	Milk
78	99	102	6	1.9	47	83	36

Nice bull that should work well on heifers.



BEST FORTUNATE 8150

BD: 5/11/2018

Reg #: 19178950

#Sinclair Fortunate Son
Best Fortunate 6056
#Rosetta 8016 of Best Angus

#LAR Alliance 64L
#Miss Marie 250 of Best Angus
Miss Marie 0013 Best Angus

Sinclair Emulate 7XT28
#Sinclair Blackbird 2P8 7079
#Leachman Right Time
#Rosetta 149 of Best Angus
#Sitz Alliance 7617
Eileenmere Diamond 161 L A R
#Car Tracker 904
C A R Miss Marie 701

BW	WW	YWR	CE	BW	WW	YW	Milk
90	92	99	3	2.9	37	81	26

Big bull out of one of our top cows. She is an extremely deep-bodied cow out of the prolific Marie cow family at Connelly Angus Ranch of Valier, Mont.



BEST FORTUNATE 8117

BD: 4/17/2018

Reg #: 19178975

#Sinclair Fortunate Son
Best Fortunate 655
Rosetta 3026 of Best Angus

#S A V 8180 Traveler 004
Rosetta 0031 of Best Angus
Rosetta 429 of Best Angus

Sinclair Emulate 7XT28
#Sinclair Blackbird 2P8 7079
#LAR Alliance 64L
#Rosetta 8016 of Best Angus
#Sitz Traveler 8180
Boyd Forever Lady 8003
#Boyd New Day 8005
#Rosetta 149 of Best Angus

BW	WW	YWR	CE	BW	WW	YW	Milk
80	97	91	6	0.3	37	68	31

Dam is as good a looking cow that has ever walked on this ranch. He has a little extra frame.



Fun on the ranch, from left, Kyle riding his horse Chance, pushing some calves and showing his steer "Beefy."



*Aaron & Sheyna Strommen
Cassidy, Cooper & Clint*

6485 County Road 80 Fort Rice, N.D., 58554
(701) 445-2020 • (701) 290-7983

strommen@westriv.com •   
www.StrommenRanch.com

Cattlemen & Friends – We are proud to partner with Bests, Talkingtons and our respective customers to offer this unique sale. It is our goal to make this sale the premiere source for maternal Angus genetics in western North Dakota.

Strommen Ranch is located 4 miles off of the Missouri River along the Cantapeta Creek near Fort Rice, N.D. Our herd consists of fertile, functional, easy-fleshing cattle that raise a big calf without creep feed. We believe that true profitability in the beef business is driven by cattle that have the Maternal POWER™ to do more with less. As your seedstock provider, we want your operation to be profitable and sustainable for generations – regardless of the market. That is why we require our stock to thrive in a Northern Plains, grass-based environment with minimal supplementation. They must do more with less.

Strommen Ranch cows must calve annually and wean a calf that is a high percentage of its dam's bodyweight. They must also possess the basic phenotypic traits to cover country, breed on time, have the smarts and mothering ability to do it on their own, all while performing under the conditions that Mother Nature has dealt us. We select for fertility, longevity, sound structure and realistic performance in the cow herd. Cattle that breed early in the cycle, are structurally sound and can raise big calves efficiently in a practical environment with minimal inputs are the kind of cattle we produce and believe will have a positive impact on your bottomline now and into the future.

The bulls we're bringing to Dickinson embody this philosophy. Retained expressly for this sale — many being ET calves from our powerful donors — they are rugged, stout, sound, packed with generations of Maternal POWER™ and are ready for service in big country. We look forward to seeing you Dec. 3, 2019, and invite you to our ranch, west of Fort Rice, N.D. Feb. 15, 2020, at 3 p.m. CST, for our Maternal POWER™ Angus Bull Sale where we'll sell 60 yearling Angus bulls.

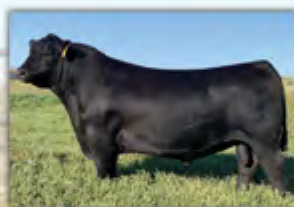
– Aaron & Sheyna Strommen, Cassidy, Cooper & Clint



Maternal POWER™ ANGUS BULL SALE

At the Ranch | *New Date:* **Feb. 15, 2020** | Fort Rice, N.D.

Selling **60** Yearling ANGUS Bulls by Bruin Torque 5261, Sinclair Emulation XXP, Connealy Capitalist 028 and more.






SAV Raindance 6848



Mohnen Substantial



Bruin Torque 5261

Aaron & Sheyna Strommen | (701) 290-7983 |    /Strommen Ranch
www.StrommenRanch.com



LOT 35 ~ S R REGARD 8149



LOT 36 ~ SR REGARD 8160



S R Lady Blue 118 • Dam of Lots 35-37

Flush Brothers



S R REGARD 8149

BD: 3/29/2018

Reg #: 19334550

BW	WWR	YWR	CE	BW	WW	YW	Milk
101	ET	ET	2	3	65	106	25



S R REGARD 8160

BD: 3/30/2018

Reg #: 19334559

BW	WWR	YWR	CE	BW	WW	YW	Milk
87	ET	ET	2	3	65	106	25



S R REGARD 8177

BD: 4/5/2018

Reg #: 19334551

#S A V Resource 1441
S A V Regard 4863
 #S A V Blackcap May 5530

#O C C Paxton 730P
S R Lady Blue 118
 #S R Lady Blue 631

Rito 707 of Ideal 3407 7075
 S A V Blackcap May 4136
 #B C C Bushwacker 41-93
 S A V May 7238
 O C C Focus 813F
 O C C Blackbird 736K
 Oak Hollow 7709 of 1318 1118
 Farview Lady Blue 2228

BW	WWR	YWR	CE	BW	WW	YW	Milk
97	ET	ET	2	3	65	106	25

These flush brothers are extremely thick, masculine and stand on a wide base, full of meat and muscle. They are out of our Lady Blue 118 donor cow that has sons working for many of the area's top cattlemen: Dean Dvorak, Justin Lund and Zillich Ranch, all of N.D.; Mark Van Dusseldorp and Casey Joens, both of S.D.; and Laurie Faber and Steppeler Ranch, both of Mont. Lady Blue 118 carries a progeny BR of 4/97, a progeny WR of 4/118 and has over 40 progeny born at Strommen Ranch. She exemplifies Maternal POWER™ and this mating made a set of stout, muscled-up bulls that will leave a set of females ranchers will drive a long distance for.



OCC Juanada 775C • Maternal Granddam of Lot 38



SAV Blackcap May 4136 • Paternal Great Granddam of Lot 35-38



SAV Blackcap May 5530 • Paternal Granddam of Lot 35-38



S R Lady Blue 118 • Full sister to the Dam of Lot 39-40



S R REGARD 8125

BD: 3/16/2018

Reg #: 19334560

#S A V Resource 1441
S A V Regard 4863
 #S A V Blackcap May 5530
 #S A V Net Worth 4200
Champion Hill Juanada 6188
 O C C Juanada 775C

Rito 707 of Ideal 3407 7075
 S A V Blackcap May 4136
 #B C C Bushwacker 41-93
 S A V May 7238
 #S A V 8180 Traveler 004
 S A V May 2410
 #N Bar Emulation EXT
 O C C Juanada 709V

BW	WWR	YWR	CE	BW	WW	YW	Milk
95	ET	ET	-2	4.8	61	107	24

Here's a cowboy's bull that has a Maternal POWER™ pedigree that would be hard to replicate. Having 4136, the mother to Resource, Blackcap May 5530, Juanada 775C and Anchor's mother, OCC Juanada 709V, all tied together in one animal is just gearing up for a maternal explosion! EPDs are based on parent average.



S R EMULATION XXP 876

BD: 3/8/2018

Reg #: 19335727

#N Bar Emulation EXT
Sinclair Emulation XXP
 #N Bar Primrose Y3051
 #O C C Paxton 730P
#S R Lady Blue 203
 #S R Lady Blue 631

#Emulation N Bar 5522
 N Bar Primrose 2424
 #N Bar Emulation EXT
 #N Bar Primrose 2429
 O C C Focus 813F
 O C C Blackbird 736K
 Oak Hollow 7709 of 1318 1118
 Farview Lady Blue 2228

BW	WWR	YWR	CE	BW	WW	YW	Milk
85	100	100	3	1.6	55	96	18

Here is the XXP X Paxton combination that has been so successful and popular in the last few sales. His Pathfinder dam is a full sister to our 118 donor and carries a progeny WR of 5/104 and a calving interval of 365 days. Brothers are working for Stepler Ranch of Mont., and Gary Siverson of N.D. Full brother in blood to Lot 40, and had an Adj. 205 of 702.



S R EMULATION XXP 8163

BD: 3/30/2018

Reg #: 19335725

#N Bar Emulation EXT
Sinclair Emulation XXP
 #N Bar Primrose Y3051
 #O C C Paxton 730P
S R Lady Blue 323
 #S R Lady Blue 631

#Emulation N Bar 5522
 N Bar Primrose 2424
 #N Bar Emulation EXT
 #N Bar Primrose 2429
 O C C Focus 813F
 O C C Blackbird 736K
 Oak Hollow 7709 of 1318 1118
 Farview Lady Blue 2228

BW	WWR	YWR	CE	BW	WW	YW	Milk
62	99	97	5	0.4	50	86	19

This XXP son is a full brother in blood to some of our sale highlights in 2017. His dam is a full sister to our Lady Blue 118 donor, who carries a 3/101 progeny WR and a 373-day calving interval. Full brother in blood to Lot 39.



LOT 39 ~ SR EMULATION XXP 876



LOT 42 ~ S R EMULATION XXP 863

Flush Brothers



S R EMULATION XXP 860

BD: 3/7/2018

Reg #: 19335739

BW	WWR	YWR	CE	BW	WW	YW	Milk
84	ET	ET	6	1.2	55	94	21



S R EMULATION XXP 863

BD: 3/7/2018

Reg #: 19335738

BW	WWR	YWR	CE	BW	WW	YW	Milk
84	ET	ET	6	1.2	55	94	21



Sinclair Emulation XXP • Sire of Lots 41-43



S R EMULATION XXP 8108

BD: 3/12/2018

Reg #: 19335736

#N Bar Emulation EXT
Sinclair Emulation XXP
#N Bar Primrose Y3051

#O C C Paxton 730P
#S R Bonnie Belle 104
#S R Bonnie Belle 980

#Emulation N Bar 5522
N Bar Primrose 2424
#N Bar Emulation EXT
#N Bar Primrose 2429
O C C Focus 813F
O C C Blackbird 736K
S R Canyon 712
MH Bonnie Belle 945

BW	WWR	YWR	CE	BW	WW	YW	Milk
83	ET	ET	6	1.2	55	94	21

Another tremendous group of flush brothers by the maternal great XXP and foundation donor S R Bonnie Belle 104. These full brothers would be a tremendous asset for an operation wanting to build a herd based on a foundation of closely bred females. We calved the first set of XXP daughters this spring and are extremely excited about the qualities they bring forward.



OCC Paxton 730P • Maternal Grandsire to Lots 41-43



S R Polly 804 • Dam of Lot 44 and Strommen Ranch foundation female



SAV Resource 1441 • Maternal Grandsire of Lots 45-47



S R EMULATION XXP 817

BD: 3/3/2018

Reg #: 19335760

#N Bar Emulation EXT
Sinclair Emulation XXP
#N Bar Primrose Y3051

#Sitz Alliance 6595
S R Polly 804
#SR Polly 323

#Emulation N Bar 5522
N Bar Primrose 2424
#N Bar Emulation EXT
#N Bar Primrose 2429
#Sitz Traveler 8180
#Sitz Barbamere Jet 2698
#O C C Emblazon 854E
#M H Polly 817

BW	WWR	YWR	CE	BW	WW	YW	Milk
92	ET	ET	3	1.4	51	90	23

With over 50 progeny born here at the ranch and a progeny WR of 6/113, Polly 804 is certainly a cornerstone to our program. Her sons are working for some of the top herds in the region and her daughters have all been retained in the herd. Sons working for Pine Coulee Angus and Gene Ryg, both of Mont.; Dan Price and Dana Sippel, both of S.D.; and Jason Erickson, Glenn & Vicki Gullickson, Roger Harstad, James Hornbacher, Bryce Leonard, Justin Lund, Cody Staiger, Ray Tescher, and Steven Zenker, all of N.D.



S R EMULATION XXP 8129

BD: 3/18/2018

Reg #: 19335698

#N Bar Emulation EXT
Sinclair Emulation XXP
#N Bar Primrose Y3051

#S A V Resource 1441
S R Dorothy Ideal 565
S R Dorothy 968

#Emulation N Bar 5522
N Bar Primrose 2424
#N Bar Emulation EXT
#N Bar Primrose 2429
Rito 707 of Ideal 3407 7075
S A V Blackcap May 4136
#O C C Great Plains 943G
Ideal 4637 of 452 285

BW	WWR	YWR	CE	BW	WW	YW	Milk
84	106	104	1	2	61	112	17

A bull that has performed when needed with a light birth weight and a pedigree that goes back to Ohlde and Jorgenson breeding. Double-bred Jorgensen. Double-bred Emulation. This bull is certain to produce progeny with the drive to do more with less. He achieved a 746 lb. adjusted 205 day weight.



S R EMULATION XXP 8159

BD: 3/30/2018

Reg #: 19335708

#N Bar Emulation EXT
Sinclair Emulation XXP
#N Bar Primrose Y3051

#S A V Resource 1441
S R Blackbird 533
DR Blackbird 157

#Emulation N Bar 5522
N Bar Primrose 2424
#N Bar Emulation EXT
#N Bar Primrose 2429
Rito 707 of Ideal 3407 7075
S A V Blackcap May 4136
Sinclair Memento 8RL4
DR Blackbird 770

BW	WWR	YWR	CE	BW	WW	YW	Milk
92	104	105	1	2.6	57	106	17

We are so impressed with the XXP daughters. They are beautiful in their appearance, fertile, have near-perfect udders and tremendous dispositions. They are cattle that will remain here for the long term. The combination of XXP on top of Resource gives the best of both worlds. Lot 46 had an individual WR of 104 with an Adjusted 205 day weight of 731 lbs.



S R EMULATION XXP 8175

BD: 4/3/2018

Reg #: 19335705

#N Bar Emulation EXT
Sinclair Emulation XXP
#N Bar Primrose Y3051

#S A V Resource 1441
S R Lucy 535
S R Lucy 951

#Emulation N Bar 5522
N Bar Primrose 2424
#N Bar Emulation EXT
#N Bar Primrose 2429
Rito 707 of Ideal 3407 7075
S A V Blackcap May 4136
#O C C Great Plains 943G
#S R Lucy 646

BW	WWR	YWR	CE	BW	WW	YW	Milk
92	99	101	0	3.3	58	107	16

We anticipate keeping the XXP daughters for a long, long time; however, these are the last XXP sons we will sell. Semen was expensive and we are out. They will add length and the daughters will be Maternal POWER™ females that will make an impact on ranch profitability through their fertility and production.

All hands on deck for AI season. Here, from left, Cooper, Aaron, Cassidy, our 2019 intern Shaina Rasmusson, and Clint are working cattle through the alleyway while mom is in the back...playing with the camera on her phone.





S R Emma E 375 • Dam of Lot 48



Farview Lady Erica 756 • Maternal Granddam of Lot 43



S R ADVANCE 8158

BD: 3/30/2018

Reg #: 19335944

#Koupal Juneau 797
Koupal Advance 28
Koupal Ebonette 734

#Leachman Right Time
S R Emma E 375
Sitz Emma E 2552

#O C C Juneau 807J
Koupals Elba 187
#S A V Initiative 4406
#Koupals Ebonette 545
#N Bar Emulation EXT
Leachman Erica 0025
#G D A R Traveler 044
Sitz Emma E 447

BW	WWR	YWR	CE	BW	WW	YW	Milk
78	99	106	11	-0.5	51	93	26

This Advance son could fill the gap with a large group of heifers. His dam is a beautiful Right Time daughter that is as gentle as they come – always wanting a scratch in the pasture – and is due first cycle to her AI date again.



S R ADVANCE 866

BD: 03/07/18

Reg #: 19335900

#Koupal Juneau 797
Koupal Advance 28
Koupal Ebonette 734

#Leachman Right Time
S R Lady Erica 6113
#Farview Lady Erica 756

#O C C Juneau 807J
Koupals Elba 187
#S A V Initiative 4406
#Koupals Ebonette 545
#N Bar Emulation EXT
Leachman Erica 0025
#O C C Traveler 723Z
Farview Lady Erica 282

BW	WWR	YWR	CE	BW	WW	YW	Milk
86	104	99	6	1.9	54	91	29

Advance paired with a Right Time daughter that scored a 10 on udder and a 9 on disposition. These Right Time daughters are good on their feet, have good dispositions and unbelievable udder structure. Keep every female. he came in last fall with an Adjusted 205 day weight of 721 lbs.



S R ADVANCE 8171

BD: 4/1/2018

Reg #: 19335934

#Koupal Juneau 797
Koupal Advance 28
Koupal Ebonette 734

#Connealy Thunder
S R Betty 522
S R Betty 3205

#O C C Juneau 807J
Koupals Elba 187
#S A V Initiative 4406
#Koupals Ebonette 545
#Baldridge Kaboom K243 KCF
#Parka of Conanga 241
#O C C Great Plains 943G
M H Betty 916

BW	WWR	YWR	CE	BW	WW	YW	Milk
75	99	98	11	-0.5	51	89	29

Another light birth Advance son that is multiple generations of calving-ease and superior females.



Leachman Right Time • Maternal Grandsire of Lots 48 & 49



Left: Cassidy brings pairs in during AI season. Middle: Clint and Aaron share lunch in the pasture. Right: Cooper gives 519 a little cake.



LOT 54 ~ S R 4 ACES 8174

Flush Brothers



S R 4 ACES 832

BD: 3/5/2018

Reg #: 19338515

BW	WWR	YWR	CE	BW	WW	YW	Milk
93	ET	ET	3	2.7	61	102	22



S R 4 ACES 871

BD: 3/8/2018

Reg #: 19338516

BW	WWR	YWR	CE	BW	WW	YW	Milk
95	ET	ET	3	2.7	61	102	22



S R 4 ACES 8172

BD: 4/2/2018

Reg #: 19338512

BW	WWR	YWR	CE	BW	WW	YW	Milk
98	ET	ET	3	2.7	61	102	22



S R 4 ACES 8174

BD: 4/3/2018

Reg #: 19338513

#Jauer 353 Traveler 589 27
 #Sitz 4 Aces 4551
 Sitz Pride 2561
 #O C C Paxton 730P
 #S R Bonnie Belle 104
 #S R Bonnie Belle 980

Jauer 7111 Traveler 353 719
 Jauer 6807 Traveler 27 085
 #D H D Traveler 6807
 Sitz Pride 2188
 O C C Focus 813F
 O C C Blackbird 736K
 S R Canyon 712
 MH Bonnie Belle 945

BW	WWR	YWR	CE	BW	WW	YW	Milk
87	ET	ET	3	2.7	61	102	22

Here is a group of flush brothers that are massive in their design, practical in phenotype and from a cow family that is productive, easy-fleshing and fertile. Pathfinder dam and sire that has a different twist to his pedigree but still fits our model for functional, practical, Maternal POWER™ Angus genetics. Dam has progeny BR of 4/97 and a progeny WR of 4/116 with over 40 progeny born on the ranch. Sons of Bonnie Belle 104 are working for Laurie Faber of Mont., and Emmitt Diede, Shannon Goetz, John Knudson, John Lord, Justin Lund, Ray Tescher and Kelly Unruh, all of N.D.



*Left to Right:
 Cooper and his
 steer, "Buck,"
 Cassidy and her
 barrow, "Burris"
 and Clint and his
 wether, "George."*



S R TORQUE 8170

BD: 4/1/2018

Reg #: 19534760

#S A V 004 Density 4336

Bruin Torque 5261

Falcon Blackbird 6071

#S A V Resource 1441

S R Lady Blue 585

S R Lady Blue 118

#S A V 8180 Traveler 004

S A V May 7238

#Connealy Dateline

#Vermilion Blackbird 5044

Rito 707 of Ideal 3407 7075

S A V Blackcap May 4136

#O C C Paxton 730P

#S R Lady Blue 631

BW	WWR	YWR	CE	BW	WW	YW	Milk
70	100		5	-1.1	56	106	27

Here is a deep, thick, efficient beef bull that is light birth weight. Dam has a progeny BR of 2/91 and a progeny WR of 2/101 and is due again to her AI date.



Bruin Torque 5261 • Sire of Lots 55-56



S R TORQUE 8153

BD: 3/29/2018

Reg #: 19333013

#S A V 004 Density 4336

Bruin Torque 5261

Falcon Blackbird 6071

Ox Bow Revival 1313

S R Miss Wix 506

#S R Miss Wix 3110

#S A V 8180 Traveler 004

S A V May 7238

#Connealy Dateline

#Vermilion Blackbird 5044

#Sitz Dash 10277

Ox Bow Manor 933

#GDAR Game Day 449

#Miss Wix 145 of Circle V

BW	WWR	YWR	CE	BW	WW	YW	Milk
83	104	99	5	1.7	54	99	28

This is a nice-made, long-spined Torque son that is attractive from the side profile. He is square-hipped and had an Adjusted 205 weight of 734 lbs., to ratio 104. His dam carries a progeny WR of 2/107 and his Pathfinder granddam has a progeny WR of 4/108.



S R CAPITALIST 895

BD: 3/10/2018

Reg #: 19334309

#S A V Final Answer 0035

#Connealy Capitalist 028

Prides Pita of Conanga 8821

JVC Hi-Tech

JVC Madame Pride 6144

JVC Madame Pride A356

#Sitz Traveler 8180

S A V Emulous 8145

#C R A Bextor 872 5205 608

Prides Trav of Conanga 6499

#Connealy Onward

SVA Lady 4465-9114

#S A V Pioneer 7301

S A V Madame Pride 8827

BW	WWR	YWR	CE	BW	WW	YW	Milk
80	100	101	8	1.6	60	107	20

Not too many sons of Capitalist 028 around. And, he goes back to the same cow family that produced the \$1.51 million dollar bull at SAV, America. We would be willing to make a deal for less than half that price!



S R Clova Pride 315 • Dam of Lot 57



S R Clova Pride 725 • Maternal Granddam of Lots 57-58



S R Clova Pride 834 • Maternal Great Granddam of Lots 57-58



S R EMULATION XXP 8168

BD: 4/1/2018

Reg #: 19335726

#N Bar Emulation EXT
Sinclair Emulation XXP
#N Bar Primrose Y3051

#O C C Paxton 730P
#S R Clova Pride 315
S R Clova Pride 725

#Emulation N Bar 5522
N Bar Primrose 2424
#N Bar Emulation EXT
#N Bar Primrose 2429
O C C Focus 813F
O C C Blackbird 736K
#B C C Bushwacker 41-93
M H Clova Pride 834

BW	WW	YWR	CE	BW	WW	YW	Milk
93	97	100	2	2.3	49	87	19

Here is a masculine, long, good-hipped XXP son out of our Clova Pride 315 donor. She sports a progeny WR of 4/109 with a 373-day calving interval. She is near perfect footed and achieved Pathfinder status. Full brother in blood to Lot 61.



S R EMULATION XXP 8138

BD: 3/25/2018

Reg #: 19335730

#N Bar Emulation EXT
Sinclair Emulation XXP
#N Bar Primrose Y3051

#O C C Paxton 730P
#S R Clova Pride 202
S R Clova Pride 725

#Emulation N Bar 5522
N Bar Primrose 2424
#N Bar Emulation EXT
#N Bar Primrose 2429
O C C Focus 813F
O C C Blackbird 736K
#B C C Bushwacker 41-93
M H Clova Pride 834

BW	WW	YWR	CE	BW	WW	YW	Milk
81	95	94	6	0.6	46	77	17

You want to talk efficiency? Here is a bull from a cow that is a legitimate 1,000 lb. cow. She weans 60-70% of her bodyweight every year and is always bred first cycle to her AI service. Maternal efficiency, Maternal POW-ER™. Udder Score 8; temperament 8. Full brother in blood to Lot 59.



S R EMULATION XXP 8143

BD: 3/27/2018

Reg #: 19335714

#N Bar Emulation EXT
Sinclair Emulation XXP
#N Bar Primrose Y3051

#S A V Resource 1441
#S R Beauty 517
S R Beauty 953

#Emulation N Bar 5522
N Bar Primrose 2424
#N Bar Emulation EXT
#N Bar Primrose 2429
Rito 707 of Ideal 3407 7075
S A V Blackcap May 4136
#Sitz Alliance 6595
S R Beauty 612

BW	WW	YWR	CE	BW	WW	YW	Milk
86	94	97	1	2.6	51	97	16

We are very happy with our XXP females. They are perfect uddered, beautifully made, fertile, efficient cows that we are extremely excited about and confident will be a huge part of our program in the future.



S R Clova Pride 202 • Dam of Lot 60



*Thank you to our customers for your
past and continued support!
Bests · Strommens · Talkingtons*





Commercial Bred Females

These bred females are the type and kind you can use to build a profitable, sustainable herd for generations. They are bred to be easy-fleshing cattle that are productive on minimal inputs, with enough emotional intelligence to be handled with minimal labor, and enough survival instinct to get out and forage, nurture their calves and bring in pounds at weaning. Many of them are carrying AI calves from proven calving-ease sires for a short calving period and have been ultrasounded for calving dates, are source verified and bred to known calving-ease genetics. Sale order will be determined by Stockmen's Livestock, as they are managing this portion of the sale.

If you have cattle out of and bred to Talkington, Strommen or Best bulls and you'd like to consign bred heifers in 2020, please contact us!

Strommen Ranch, Fort Rice, ND

33 AI BRED HEIFERS, DUE MARCH 20

12 AI BRED HEIFERS, DUE APRIL 10

Contact: **Aaron, Sheyna, Cassidy, Cooper & Clint Strommen • (701) 290-7983**

We bought these heifers from long-time Strommen Ranch bull customers and friends Kevin Zillich and family at Taylor. Zillichs have a reputation of selling market-topping steers and these heifers have a history of proven AI genetics that runs more than 15 years deep. Maternal POWER™ genetics, including Alliance 6595, Traveler 004, Bando 9074, BC Matrix, Larks Canyon, Resource 1441, Connealy Thunder, Bandwagon, Capitalist, Chisum 255, Right Answer, Final Answer, Outfitter and Game Day. Thirty-three are AI'd to the ABS calving-ease sire Mohnen Substantial and are due March 20. Twelve are AI'd to SAV Rainfall 6846 and are due April 10. Each one is carrying an AI-sired calf. We used Substantial last year and we were really impressed with the vigor of the calves at birth and how they pushed the scale down at weaning.

These heifers were ultrasounded by Mandan Vet Clinic for sex and date, are gentle and cake broke. They have received a full health and mineral program, including Vira Shield 6 VL5 HB, drenched with Safe Guard and poured with Saber at ultrasound time. They are the type and kind to set an operation up for future profit and success!



Mohnen Substantial



SAV Rainfall 6846

David & Nila Meuchel, Dickinson, ND

10 AI BRED HEIFERS, DUE APRIL 10

7 BRED HEIFERS, DUE MAY 1

Contact: **David & Nila Meuchel • (701) 483-6904 or (701) 260-0368**

David and Nila are repeat consigners who winter their cows east of Dickinson and summer and fall graze them in the rolling hills north of Beach. They have achieved a high level of uniformity and quality in their cow herd by implementing a substantial AI program in their herd over the last eight years. These heifers are AI-sired by S Chisum 255 and Werner War Party, the balance are out of Connealy Capitalist herd bulls. The AI-bred heifers are bred to Werner Flat Top 4136. The bull bred heifers are bred to two calving-ease Talkington Bulls, SAT Revival 853 and SAT Versatile 8120.

They were ultrasounded by Dr. Erika Schumacher. The AI-bred heifers are due April 10 and the bull-bred heifers are due May 1. They will weigh 1,150 lbs. by sale time and will be some of the most docile heifers you will find anywhere. The heifers were poured with Ivomec and vaccinated with PregGuard Gold FP10.



Werner Flat Top 4136



Connealy Capitalist

Tim Lippert, St. Anthony, ND

50 AI BRED HEIFERS, DUE MARCH 20

Contact: **Tim Lippert • (701) 391-2969**

First-time consigner Tim Lippert is bringing us a set of heifers that originated from the Jim and Julie Hornbacher herd and are sired by sons of OCC Juneau 807J from Strommen Ranch. Their cowherd carries the genetics of Right Time, Alliance 6595 and Emblazon. They have purchased many purebred Angus females with heavy use of Strommen Ranch bulls since 2007. They are AI'd to Eathington Sub-Zero, a proven, bet-the-ranch, calving-ease sire from Genex that will leave you tremendous replacement females and calves with excellent vigor at birth.

Tim is bringing the very best 50 heifers out of a group of 120 and each one is carrying an AI-sired calf. They've had a full health and mineral program, including Vira Shield 6 VL5 HB, Scour Bos 9, poured with Ivermectin Oct. 3 and free choice Repromune mineral.



Leachman Right Time



Eathington Sub Zero

Mike Heaton Family, McKenzie ND

22 BRED HEIFERS, DUE MARCH 24 FOR 40 DAYS

Contact: Mike, Connie & Travis Heaton • (701) 220-0496

Mike, Connie and Travis Heaton are the 4th and 5th generation to ranch near McKenzie, ND, on an operation that has been in their family for 100 years. The family is developing a cowherd that requires minimal labor by focusing on problem-free udders and unassisted calving. They have strictly used Angus bulls for the past 20 years – most recently from Best Angus – and they raise their own replacement females. These heifers were AI'd to Best Box Cross and cleaned up with a Best Box Cross son.

They were given Dectomax Injectable, PregGuard last spring and were pregnancy ultrasounded by the Steele Veterinary Clinic for a March 24 calving date. Second cycle heifers will calve between April 10 and May 3. They will weigh approximately 1,000 lbs by sale day.



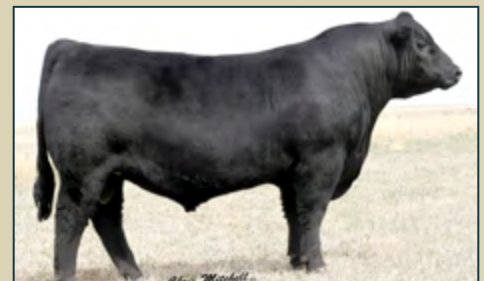
Best Box Cross

Talkington Angus Ranch, Belfield, ND

10 BRED HEIFERS, DUE APRIL 10 FOR 20 DAYS

Contact: Shane, Amanda, Abby, Hadley & Cade Talkington • (701) 290-7222

We develop these heifers on the edge of the Badlands to be easy-fleshing cattle on minimal inputs. They are easy-to-handle and will be run on native grass until sale time. They are bull bred to two calving-ease bulls. One is a son of Connealy Confidence 0100 and the other is a son of CCA Uno 049. These heifers include daughters of Ellingson Versatile, Brooking Prosecutor, SAT Revival and Resource 4201. They have been de-wormed with Safe-Guard, poured with Clean-Up II and received Vista 5 VL5 prior to breeding. They were pregnancy ultrasounded by Dr. Chandy Olson and will calve April 10-30. They will weigh 1,100 lbs. by sale day.



Connealy Confidence 0100



CCA Uno 049

Justin Lund, Ross, ND

20 BRED HEIFERS DUE MARCH 10 FOR 21 DAYS

30 BRED HEIFERS DUE APRIL 1 FOR 21 DAYS

Contact: Justin, Bernadette, Prayrie & Dayne Lund • (701) 629-1424

Justin and Bernadette are the 4th generation of Lunds to ranch in Western Mountrail County. These top-of-the-herd heifers are sired by Strommen Ranch sons of Resource, Sinclair Emulation XXP and sons of Open Country. They are pasture-bred to calving-ease sons of Connealy Capitalist from Strommen Ranch and a son of Best Box Cross from Best Angus. Twenty head will calve March 10 for 21 days and 30 head will calve April 1 for 21 days.

Justin has used AI breeding within his herd for many years and the heifers will have a genetic tabulation of some of the breed's best. The genetics represented here should allow these heifers to calve easily and the feeder steers should grow well and their heifers will be keepers. The bred heifers they've consigned were raised on the native range of the White Earth Valley.

These heifers were pregnancy ultrasounded by Hermanson Vet Service and received a full health program including BoviShield Gold FP 5+VL5 in the spring, CattleMaster 4+VL5, ScourGuard 4KC and Dectomax this fall. They will weigh approximately 1,050 lbs. on sale day.



Connealy Capitalist



SAV Resource 1441

Birdhead Ranch, Arnegard, ND

20 BRED HEIFERS, DUE APRIL 1 FOR 30 DAYS

Contact: Dustin & Sara Ceynar or David & Virginia Ceynar • (701) 770-1535

Dustin and his family are the 4th generation to ranch in the Missouri River Breaks north of Arnegard. The Ceynars have developed a herd that thrives in the rugged environment in which they are located and have built a following for their feeder calves, as they've consistently topped the market in Dickinson every October. This will be the first time they have offered bred females for sale.

The Ceynars have been Talkington customers since 2003. They run one of the most disciplined breeding and genetic programs that we work with. They have currently reduced their breeding season to 49 days and buy large groups of half-brothers. These heifers would be out of sons of Connealy Confidence, GDAR Game Day, Fortunate Son and most prominently, Soo Line Motive. They are all bred to calving-ease sons of Koupal Juneau 797.

These heifers will weigh 1,050 lbs. by sale day. They were pregnancy ultrasounded by Dr. Chandy Olson and are due to calve April 1-30. They have been poured with Dectomax and were given Vista 5 VL5 prior to breeding.



Soo Line Motive



Koupal Juneau 797

Sorenson Ranch, Watford City, ND

50 BRED HEIFERS, DUE APRIL 15 FOR 30 DAYS

Contact **Jarvis & Kadie Sorenson • (701) 570-6680**

Sorenson's ranch was established in 1906 and as the 4th and 5th generation, Jarvis and his family focus on raising cattle that do well on Badlands pasture and thrive on tame grass. Jarvis has a great eye for cattle and buys a lot of calves and bred females for producers throughout North Dakota and Montana. This nice, deep-ribbed, feminine set of heifers are all home raised from the heart of their herd. Sorensons have been long time customers of Talkington Angus and Best Angus. These heifers were bred to Winchester Alliance sons from Best Angus. Many of the dams are own daughters of TC Total and Coleman Regis. Longevity is a very important criteria for Jarvis, who semen tested a 10-year-old 004 son that passed his test with flying colors this spring.

These heifers were ultrasounded by Bruce Pederson and are due April 15 for 30 days. They've been on a health program including Vira Shield.



Angus Alliance Winchester 975



Coleman Regis 904

Best Angus & Quarter Horses, Watford City, ND

19 AI HEIFERS, DUE MARCH 23

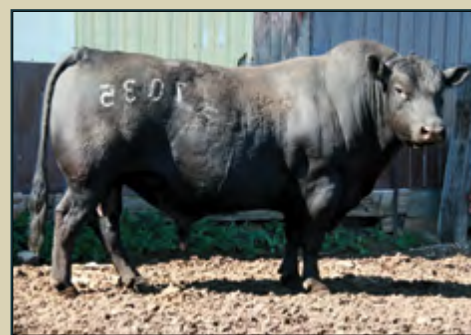
15 BRED HEIFERS, DUE APRIL 1 FOR 30 DAYS

8 BRED HEIFERS, DUE MAY 1 FOR 30 DAYS

Contact: **Pete, Vawnita & Kyle Best • (701) 570-6959**

We purchased 37 head from Trent Schneider of Hebron. Trent has been a Best Angus customer for a long time and a friend for even longer. He has a strong reputation for selling top replacement heifers. When he decided to sell out his cow herd this past year, we gladly purchased his top heifer calves. They are the kind that everyone says they want. They are soggy and deep, yet very attractive and feminine. They will be some of the smallest framed heifers in the offering, but will weigh much more than they look and should weigh 1,100 lbs. by sale day. Trent's cow herd is based on Best Angus and McCumber genetics. Trent has also focused on buying good bulls out of the very best cows. We are also including 8 bred heifers from our program.

These heifers were AI'd to and cleaned up with Best Angus heifer bulls. They were ultrasounded by Bruce Pederson and have received Vira Shield and Ivomec.



Best Right Time 7035
Owned by Trent Schneider

David and Tammy Vetter Family, Berthold ND

20 BRED HEIFERS, DUE APRIL 1 FOR 15 DAYS

Contact: **Dave Vetter • (701) 720-1479**

Second-year consigner Dave Vetter has been building his herd of easy-fleshing, fertile cows by keeping his own replacements for the past 25 years. The only females purchased was a group of 2012-model heifers from Best Angus and Perry Ecker. Vettters have combined the Emulation and Ohlde bloodlines through bulls purchased from Best Angus and Strommen Ranch. They are bringing their top-cut to town with nothing held back. Recent bulls have been sired by Connealy Thunder and Fortunate Son. The F-1 black baldie heifers are sired by Helbling Hereford bulls and bred to sons of Winchester and Box Cross from Best Angus. These heifers are very gentle and cake broke.

They were pregnancy ultrasounded by Dr. Kristi Best and are due to calve April 1-15. They will weigh 1,050 lbs by sale day. The heifers received a full health program including Preg-Guard 10, footrot vaccine, 7-way, CattleMaster VL5, Dectomax, Vitamin A-D, and the first round of ScourGuard.



Connealy Thunder



Rosetta 2005 of Best Angus • Granddam of the calves carried by most of these heifers

Hoerner Ranch, Richardton, ND

10 BRED HEIFERS, DUE MARCH 15 FOR 30 DAYS

Contact: **Mac & Nicole Hoerner • (701) 290-8725**

The Hoerners have a multi-generational family operation north of Richardton, including 3rd generation rancher Pete Hoerner and his son and daughter-in-law, Mac and Nicole and their children, who represent the 4th and 5th generations, respectively. The Hoerners have run a closed herd for many years. Their cattle must be forage-efficient and they receive minimal supplementation. They are bringing a set of bull-bred heifers that were bred by a Final Answer son and a calving-ease son of Versatile from Talkingtons. They have AI'd for years to bulls like Connealy Capitalist, Connealy Comrade and Connealy Combination. They have also purchased Capitalist sons from Talkington Angus Ranch.

They were pregnancy ultrasounded by Dr. Chandy Olson and are due March 15 to April 10. They will weigh 1,100 lbs. by sale day and have been drenched with SafeGuard, poured with Ivermectin and vaccinated with Vista 5 VL5.



Ellingson Versatile



Connealy Capitalist

Jordan and Heather Braaflat, Plaza, ND

10 BRED HEIFERS, DUE APRIL 1 FOR 30 DAYS

Contact: **Jordan and Heather Braaflat • (701) 497-3053 (701) 898-1264**

Jordan and Heather are repeat consigners who are the 3rd generation to ranch just west of Plaza. This group of home-raised heifers descend from sons of Connealy Confidence and the best True Grit son Talkingtons raised. The heifers are bred to SAT Ozzie 7193, a calving-ease son of Ox Bow Ozzie out of a Pathfinder daughter of Soo Line Motive.

These heifers will weigh 1,050 lbs. by sale day and were PG'd by the Minot Vet Clinic. They were vaccinated with CattleMaster FP and poured with Ivomec.



SAT Ozzie 7193

Jerry Schmidt, Driscoll, ND

25 AI BRED HEIFERS, DUE MARCH 6

Contact: **Jerry Schmidt • (701) 471-6906**

Repeat consigner Jerry Schmidt of Driscoll is known for his outstanding bred heifer development program. He is bringing 25 easy-fleshing, highly maternal bred heifers that originated from the Prairie Diamond Ranch of Hebron, N.D. They are sisters to the popular group he brought us last year. Their pedigrees go back to Strommen Ranch sons of Resource also Advance, Territory and Bandwagon bloodlines. These heifers are AI'd to Ellingson Homegrown, every one having an AI sired calf. Tremendous opportunity here to purchase high-quality, reputation replacement females with herd history and breeding to go along with.

They were ultrasounded and sexed by the Steele Veterinary Clinic. These heifers were developed on native pasture. They are on grass hay and supplement the last 30 days and will weigh around 1,100 lbs. by sale day. They've received a full herd health, vaccination and Purina mineral program including Bovishield Gold VL5, poured with Decomax and again with Clean-up at ultrasound time.



Ellingson Homegrown



LT Bandwagon

Alex, Nancy & Ambree Deis, Linton, ND

40 AI BRED HEIFERS, DUE MARCH 18

Contact: Alex Deis • (701) 321-1491

Alex and Nancy have brought us a nice set of heifers that originated from the Jeff Hornbacher herd. They are out of sons of Resource, Capitalist and Seedstock and the cowherd carries the genetics of Right Time and Alliance 6595. These heifers have the genetic ability to provide you with unbelievable replacement heifers and a set of scale-pounding steers. This is a set of heifers you can build a herd from.

They are AI'd to ABS calving-ease sire Mohnen Substantial, who is known for his maternal strengths, udder quality, disposition, efficiency, fleshing ability and, most importantly, vigor in his calves at birth. Substantial calves are laser-focused on getting up and nursing. Every one of these heifers carries an AI-sired calf for a March 18 calving date.

They were ultrasounded for sex and calving date by the Steele Vet Clinic and have received PregGuard 10 and Nutriserv Mineral.



Sitz Alliance 6595



Mohnen Substantial

Hovde Ranch, Alexander ND

40 BRED HEIFERS, DUE APRIL 25 FOR 45 DAYS

Contact: Lynn and Nathan Hovde Families • (701) 580-0314

The Hovdes focus on feed-efficient, maternally oriented, docile cattle that require less management. Three generations of Hovedes are working on the diversified operation that includes a cow-calf enterprise and a 1,000 head feedlot. They have pushed their calving date back to May 1. They won the NCBA Environmental Stewardship Award for Region 7 in 2008.

These heifers were AI'd to Tehema Tahoe and cleaned up by a son by Best Bakken and a GDAR Justified son. Hovde's have kept their own replacements for more than 50 years. Their cowherd's genetics are influenced by GDAR, Washburn Angus and Best Angus. Recent sires include sons of Leupold, Dateline, LAR Alliance 64L and Fortunate Son.

These heifers were ultrasounded by High Plains Veterinary Clinic, and are due to calve April 25-June 10. They will weigh approximately 1,000 lbs. by sale day and have been given a vaccination program including Preg Guard, Ivomec and Safeguard.



Tehema Tahoe B767



Best Bakken 4013

Malkowski Ranch, Fairfield, ND

30 BRED HEIFERS, DUE APRIL 1 FOR 30 DAYS

Contact: **Kasey & Darnyl Malkowski (701) 290-3625**

The Malkowski's are the 3rd generation to ranch north of Fairfield and are making their debut at this sale with a nice set of home-raised F1 baldies. Half of the heifers are sired by two Missing Link sons from Talkingtons out of Hereford cows. The other half are sired by Hereford bulls out of Angus cows. The heifers are bred to two calving-ease Talkington bulls, SAT Ozzie 7138 and SAT Versatile 803. They will weigh 1,100 lbs by sale day.

They were pregnancy ultrasounded by Dr. AJ Domek and are due April 1-31. They have been poured with Ivomec and vaccinated with PregGuard 10.



Ellingson Versatile



O C C Missing Link

Strommen Ranch, Fort Rice, ND

10 3 & 4-YEAR OLD BRED COWS, DUE APRIL 1 FOR 30 DAYS

Contact: **Aaron Strommen • (701) 290-7983**

This is a nice set of 3 and 4-year-old purebred Angus females bred for April 1 calving for 30 days. Many of these cows have calves that we retained for either our replacement heifer or bull pen. The maternal lineage behind these females includes p-roven Angus legends like EXT, Traveler 8180, Sitz Alliance 6595, Leachman Right Time, OCC Paxton, OCC Emblazon, Connealy Capitalist, Connealy Thunder and Larks Canyon. They were cleaned-up with sons of Resource and XXP.

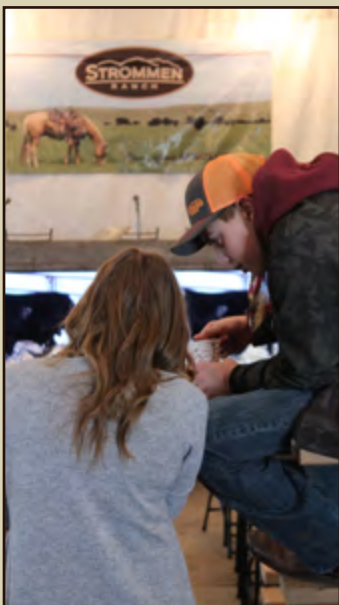
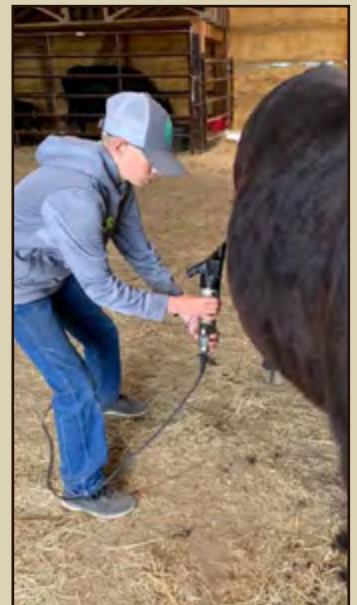
This group of young cows was ultrasounded for calving date and sex by Mandan Vet Clinic. A high percentage of these females are AI-sired by bulls we have used in our program: Capitalist, Resource, XXP, etc. They are freeze branded and papers can be purchased for an additional fee. They were given Vira Shield 6 VL5 HB and poured at ultrasound time.



SAV Resource 1441



Connealy Capitalist 028





Badlands Angus Alliance

6485 COUNTY ROAD 80
FORT RICE, N.D., 58554



Pete, Vaunita & Kyle Best



Bull & Bred Female Sale **DEC. 3, 2019** STOCKMEN'S WEST, DICKINSON, ND

The Best, Strommen and Talkington herds are each backed by a similar maternally-oriented, balanced-trait breeding philosophy. We each place heavy emphasis on fertile, efficient, easy-fleshing cows, which is why our genetics fit well together for discriminating cattlemen who desire cattle backed by generations of MATERNAL POWER™ – phenotypically appealing females with good feet, great udders and outstanding docility.

We invite you to join us in Dickinson on Dec. 3, 2019, for the Badlands Angus Alliance Bull & Bred Female Sale featuring elite, source-verified bred females from our customers and stout, rugged, coming 2-year-old bulls from our respective programs.



*Shane, Amanda, Abby, Hadley
& Cade Talkington*



Aaron, Sheyna, Cassidy, Cooper & Clint Strommen

Selling **60** COMING
500+ 2-YR-OLD
ANGUS
BULLS
BRED
FEMALES